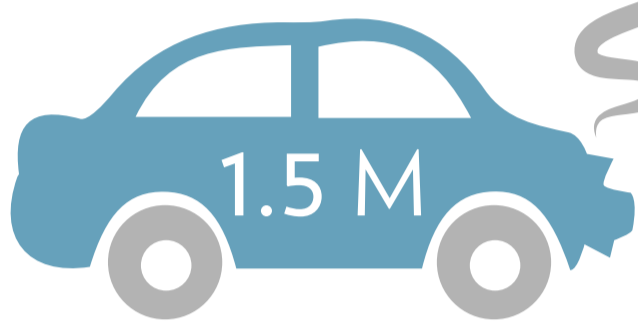


WINTER WEATHER DRIVING BE PREPARED

Each Year

poor weather-related driving conditions are associated with:



1.5 M
vehicle crashes



7,000
fatalities

800,000
injuries



WHEN DO CRASHES OCCUR?



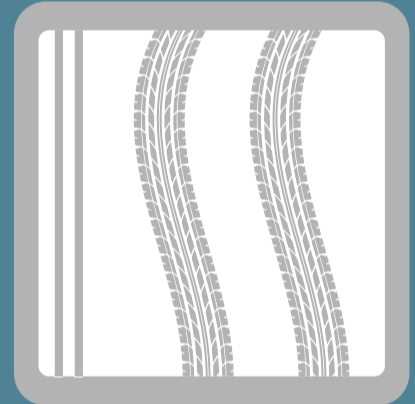
While snowing
or sleet

15%



Icy pavement

13%



Snow or slushy
pavement

11%

PREPARE YOUR VEHICLE



Check anti-freeze
levels



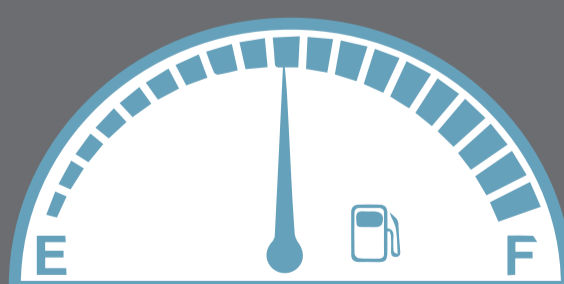
Add de-icer to
windshield solution



Check air pressure
in tires



Carry an
emergency kit



Refill the gas tank
when 1/2 empty



Keep jumper cables
in the car

Created by:



www.vfis.com

Source: ncbnlm.nih.gov :: NSC.org :: usfa.fema.gov :: CDC.gov ::